

River Road Estates—Trempealeau, WI

Updated Oct 2015

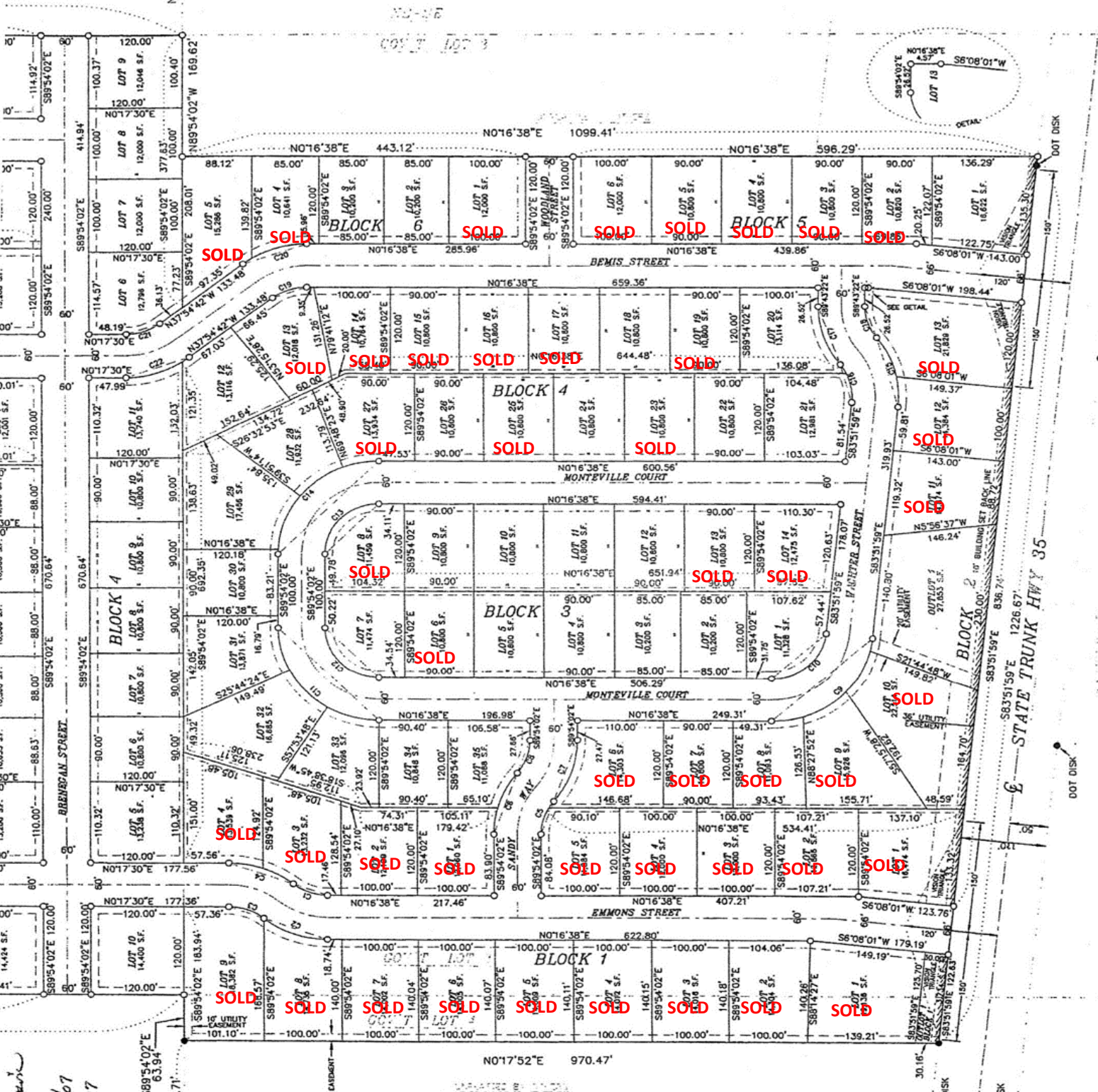
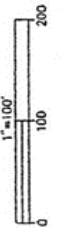
N89°54'02"W 1325.61'
EAST 1/4 CORNER SEC. 26
T 18 N, R 9 W
ALUM. CAP

LEGEND

- 1.05" O.D. IRON PIPE IN PLACE UNLESS OTHERWISE NOTED.
 - SET 1.25" x 24" IRON BAR, 4.3 LBS./FT. AT EXTERIOR, BLOCK & MEANDER CORNERS
SET 3/4" x 24" IRON BAR, 1.5 LBS./FT. AT ALL OTHER LOT CORNERS
 - //// NO ACCESS
- ALL DISTANCES ARE MEASURED TO THE NEAREST HUNDREDTH OF A FOOT.

BEARING REFERENCE:

EAST - WEST 1/4 LINE
SECTION 26, T18N, R9W
ASSUMED S89°54'02"E



Robert B. ...
9/28/06
REV. 1/17/07
REV. 2/14/07

WEST 1/4 CORNER SEC. 26
T 18 N, R 9 W
BERNTSEN ALUM. MONT

There are no objections to this plat with respect to s. 236.15, 236.16, 236.20 and 236.21 (1) and (2), Wis. Stats. as provided by s. 236.12, Wis. Stats.

Certified *February 20th, 2007*

Rene M. Doney
Department of Administration

